

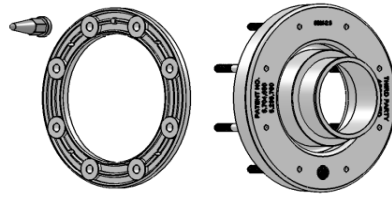
Penetration Fittings, Terminating & Test Reducers for

Nupi Pipe

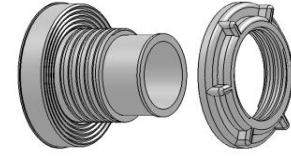
List Price Effective 7/1/08



Diversified Products Mfg. Inc.
Oroville, California, USA
www.dpm-llc.com
Phone: 1-530-534-3966
Fax: 1-530-534-7404



Sump Exterior Sump Interior



Sump Exterior Sump Interior

Pipe Description

or

Pipe Product Number

- TSMA()180
- TSMA()160
- TSMA() 125
- TSMA() 110
- TSMA() 90
- TSMA() 75
- TSMA() 63
- TSMA() 50
- TSMA() 40

Electrical Conduits & Small Product Pipe

- 1" PVC Coated Conduit
- 1" Rigid Steel Conduit
- 32 mm Pipe
- 3/4" PVC Coated Conduit
- 3/4" Rigid Steel Conduit & 25 mm Pipe
- 1" Conduit w 3/4" PVC Insert
- 1" Conduit w 3/4" Insert
- 1" Conduit w/ 3/4 & 1/2 Coated Inserts
- 1" Conduit w/ 3/4 & 1/2 Inserts

Studded Penetration Fittings

Prod #	Any Qty		Distributor Packs	
	List	Qty	Qty	List
14S-7.1	\$243.50	-		\$243.50
12S-6.3	\$92.61	10		\$85.20
10S-5.0	\$34.58	10		\$31.81
10S-4.4	\$34.58	10		\$31.81
8S-3.6	\$27.16	24		\$24.99
8S-3.0	\$27.16	24		\$24.99
8S-2.5	\$27.16	24		\$24.99
8S-2.0	\$27.16	24		\$24.99
8S-1.6	\$27.16	24		\$24.99
4S-1.4	\$22.20	36		\$20.42
4S-1.4	\$22.20	36		\$20.42
4S-1.3	\$22.20	36		\$20.42
4S-1.2	\$22.20	36		\$20.42
4S-1.1	\$22.20	36		\$20.42
4S-42	\$24.70	36		\$22.72
4S-41	\$24.70	36		\$22.72
4S-429	\$27.70	36		\$25.48
4S-419	\$27.70	36		\$25.48

Threaded Penetration Fittings

Threaded Prod #	Any Qty		Distributor Packs	
	List	Qty	Qty	List
n/a	n/a	n/a	n/a	n/a
n/a	n/a	n/a	n/a	n/a
n/a	n/a	n/a	n/a	n/a
B6-4.5	\$32.21	25/30/50		\$29.64
B5-3.6	\$28.95	36/54/72		\$26.63
B5-3.0	\$28.95	36/54/72		\$26.63
B5-2.5	\$28.95	36/54/72		\$26.63
B5-2.0	\$28.95	36/54/72		\$26.63
B5-1.6	\$28.95	36/54/72		\$26.63
B2-1.4	\$22.20	24/144		\$20.42
B2-1.4	\$22.20	24/144		\$20.42
B2-1.3	\$22.20	24/144		\$20.42
B2-1.2	\$22.20	24/144		\$20.42
B2-1.1	\$22.20	24/144		\$20.42
B2-42	\$24.70	24/144		\$22.72
B2-41	\$24.70	24/144		\$22.72
B2-429	\$27.20	24/144		\$25.02
B2-419	\$27.20	24/144		\$25.02

Terminating & Test Reducers

Application	Prod #	Base	"HP" Add \$	"A" Add \$
180 over 110	RA 7.1x4.4	\$60.00	\$15.00	\$6.30
180 over 90	RA 7.1x3.6	\$60.00	\$15.00	\$6.30
160 over 90	RA 6.3x3.5	\$24.00	\$15.00	\$6.30
125 over 90	RA 5.0x3.6	\$23.00	\$15.00	\$6.30
90 over 75	RA 3.6x3.0	\$18.00	\$15.00	\$6.30
90 over 63	RA 3.6x2.5	\$18.00	\$15.00	\$6.30
75 over 63	RA 3.0x2.5	\$15.00	Coaxial Design with Air Valve	
63 over 50	RA 2.5x2.0	\$13.00	Coaxial Design with Air Valve	
40 over 32	RA 1.6x1.3	\$11.00	Coaxial Design with Air Valve	
2 ft Long Crossover Tubing	Xover-2ft	\$11.50		
2 ft Long Crossover Test Tubing	Xover-Test	\$27.95		



All terminating and test reducers are provided with Worm Gear Clamps and are rated to 10 PSIG operating Pressure. High Pressure Models are rated to 35 PSIG and include T Bolt Clamps add "HP" to the end of the product number. For molded in air test valves add "A" to product numbers. **Example RA 5.0x3.6HPA**

Terms: Prepaid - Export Customers
Freight: Billed to Customers Account
Discounts: per Distributor Agreement

Note: Above Prices are for "Competitive" Single Sided Penetrations. DPM offers a complete line of Double Sided, Filled and Monitored Penetration Fittings. Some fittings have a 20 year Parts & Labor Warranty available (USA Installations Only)
Call For Literature or Pricing