

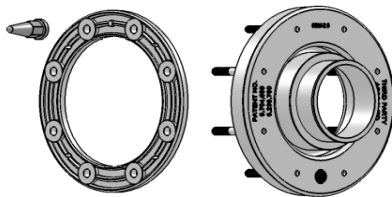
Penetration Fittings, Terminating & Test Reducers for

**Ameron Pipe**

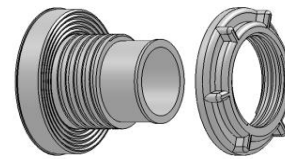
List Prices effective 7/1/08



Diversitied Products Mfg. Inc.  
Oroville, California, USA  
[www.dpm-llc.com](http://www.dpm-llc.com)  
Phone: 1-530-534-3966  
Fax: 1-530-534-7404



Sump Exterior Sump Interior



Sump Exterior Sump Interior

**Pipe Description  
or  
Pipe Product Number**

- 6" Dualoy 3000L
- 4" Dualoy 3000LCX
- 4" Dualoy 3000L
- 3" Dualoy 3000LCX
- 3" Dualoy 3000L
- 2" Dualoy 3000LCX
- 2" Dualoy 3000L

**Electrical Conduits**

- 1" PVC Coated Conduit
- 1" Rigid Steel Conduit
- 32 MM Pipe
- 3/4" PVC Coated Conduit
- 3/4" Rigid Steel Conduit
- 1" Conduit w 3/4" PVC Insert
- 1" Conduit w 3/4" Insert
- 1" Conduit w/ 3/4 & 1/2 Coated Inserts
- 1" Conduit w/ 3/4 & 1/2 Inserts

**Studded Penetration Fittings**

Prod #	Any Qty List	Distributor Packs	
		Qty	List
12S-6.7	\$92.61	12	\$85.20
10S-4.8	\$34.58	10	\$31.81
10S-4.5	\$34.58	10	\$31.81
10S-3.8	\$34.58	10	\$31.81
8S-3.6	\$27.16	24	\$24.99
8S-2.7	\$27.16	24	\$24.99
8S-2.4	\$27.16	24	\$24.99
4S-1.4	\$22.20	36	\$20.42
4S-1.4	\$22.20	36	\$20.42
4S-1.3	\$22.20	36	\$20.42
4S-1.2	\$22.20	36	\$20.42
4S-1.1	\$22.20	36	\$20.42
4S-42	\$24.70	36	\$22.72
4S-41	\$24.70	36	\$22.72
4S-429	\$27.70	36	\$25.48
4S-419	\$27.70	36	\$25.48

**Threaded Penetration Fittings**

Threaded Prod #	Any Qty List	Distributor Packs	
		Qty	List
n/a	n/a	n/a	n/a
B6-4.8	\$32.21	25/30/50	\$29.64
B6-4.5	\$32.21	25/30/50	\$29.64
B6-3.8	\$32.21	25/30/50	\$29.64
B6-3.6	\$32.21	25/30/50	\$29.64
B6-2.7	\$32.21	25/30/50	\$29.64
B6-2.4	\$32.21	25/30/50	\$29.64
B2-1.4	\$22.20	24/144	\$20.42
B2-1.4	\$22.20	24/144	\$20.42
B2-1.3	\$22.20	24/144	\$20.42
B2-1.2	\$22.20	24/144	\$20.42
B2-1.1	\$22.20	24/144	\$20.42
B2-42	\$24.70	24/144	\$22.72
B2-41	\$24.70	24/144	\$22.72
B2-429	\$27.20	24/144	\$25.02
B2-419	\$27.20	24/144	\$25.02

**Terminating & Test Reducers**

Application	Prod #	Base	"HP" Add \$	"A" Add \$
6" over 4"	RA 6.7x4.5	\$25.00	\$15.00	\$6.30
4" LCX	RA 4.8x4.5	\$38.00	\$15.00	\$6.30
4" over 3"	RA 4.5x3.6	\$21.50	\$15.00	\$6.30
3" LCX	RA 3.8x3.5	\$32.00	\$15.00	\$6.30
3" over 2"	RA 3.6x2.4	\$18.50	\$15.00	\$6.30
2" LCX	RA 2.7x2.4	\$28.00	\$15.00	\$6.30
2 ft Long Crossover Tubing	Xover-2ft	\$11.50		
2 ft Long Crossover Test Tubing	Xover-Test	\$27.95		



All terminating and test reducers are provided with Worm Gear Clamps and are rated to 10 PSIG operating Pressure. High Pressure Models are rated to 35 PSIG and include T Bolt Clamps add "HP" to the end of the product number. For molded in air test valves add "A" to product numbers. **Example RA 4.8x4.5HPA**

Terms 3% 10 days Net 30 days  
Freight 100% freight credit on shipments of \$2500 net or more to one destination within the USA  
Freight is Billed to Customers UPS account number  
Discounts per Distributor Agreement

Note: Above Prices are for "Competitive" Single Sided Penetrations. DPM offers a complete line of Double Sided, Filled and Monitored Penetration Fittings. Some fittings have a 20 year Parts & Labor Warranty available (USA Installations Only)